



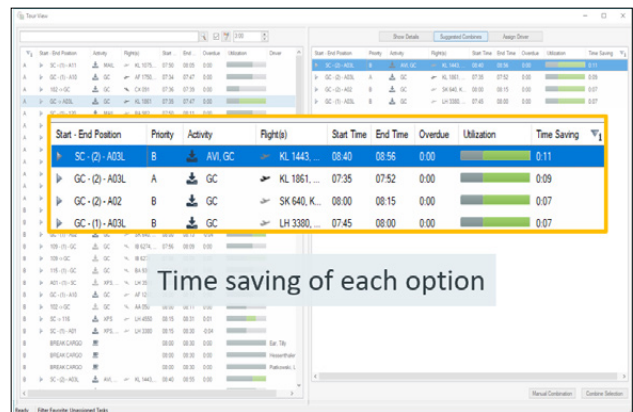
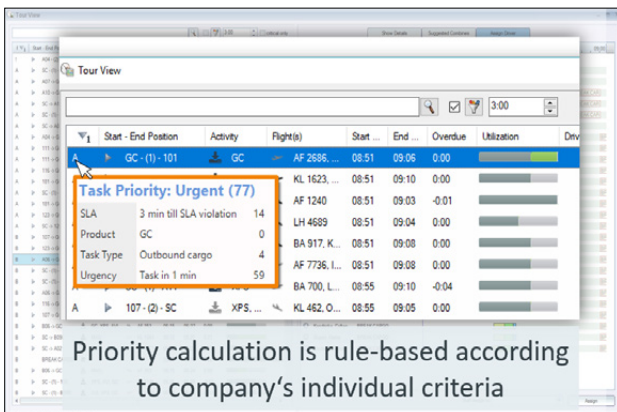
CARGO SOFTWARE SOLUTION

- Prioritized SLA compliance for high value products
- Increased driver & dispatcher productivity
- Higher capacity utilization through optimized tours
- Reduction of unproductive trips
- Offload risk minimization

/ CARGO SOFTWARE SOLUTION

INFORM's Cargo software solution provides a user-centric decision support for tour building and driver assignment. Through elaborated algorithms, a clear-cut prioritization of tasks and tours is made, leading to an optimized utilization of the vehicles with each trip. Task priorities are calculated according to the respective rule set, taking into account criteria such as urgency, time to Service Level Agreements (SLA), cargo product and flight priority. To optimally assign the drivers, tasks are presented in order of priority.

A user-centric Graphical User Interface (GUI) guides the user to work along those task priorities, if exceptions have to be managed. Also, tour details such as flights, locations and vehicle utilization are visualized. The user is presented with further utilization opportunities, which involve a certain risk of missing SLAs. This supports an optimal assignment of drivers and vehicles while leaving the final risk & benefit decision to the user.



INFORM's Cargo software solution uses telematics, creating operational awareness for location-based optimization and the progression of tasks. This feature enables dynamically adjusted planning, based on actual traffic. Current waiting times are measured and the waiting times for upcoming tasks are automatically forecasted.

These measures result in a higher productivity and increased SLA compliance of high value products, ultimately leading to an increased profit margin.

Contact data

INFORM GmbH
Pascalstraße 35 / 52076 Aachen / Germany
inform-software.com